

EHV MISCELLANEOUS

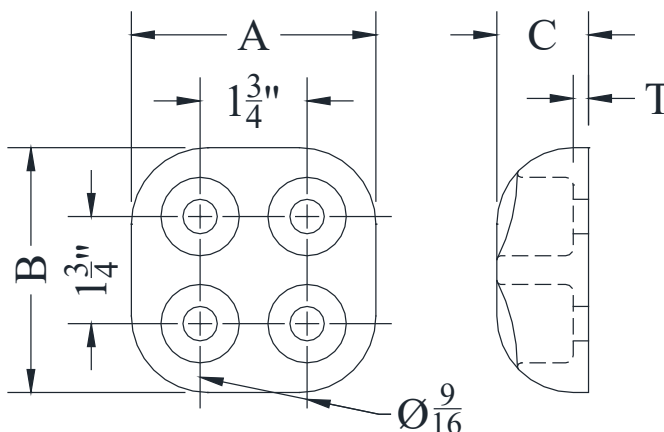
ALUMINUM • 345 - 500kV

TYPE AA-1094

Hardware Shield

Casting: 356-F Aluminum

This 4" x 4" hardware shield is designed to shield pad mounting hardware on in-line 345 and 500kV connections. The pad has NEMA drilling.



ACCOMMODATES $\varnothing 1\frac{1}{4}$ WASHER

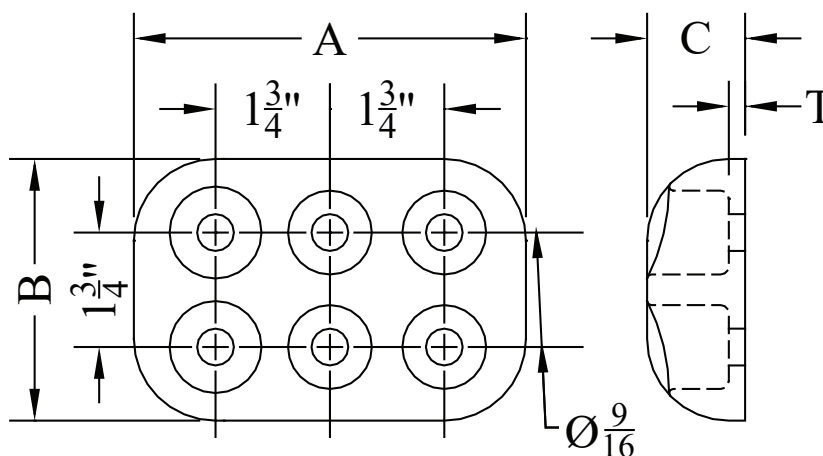
CATALOG NUMBER	DIMENSIONS - INCHES				WEIGHT (POUNDS)
	A	B	C	T	
AA-1094	4	4	1-1/2	1/4	1.13

TYPE HS-6B

Hardware Shield

Casting: 356-F Aluminum

This 6" x 4" hardware shield is designed to shield pad mounting hardware on in-line 345 and 500kV connections. The pad has NEMA drilling.



ACCOMMODATES $\varnothing 1\frac{1}{4}$ WASHER

CATALOG NUMBER	DIMENSIONS - INCHES				WEIGHT (POUNDS)
	A	B	C	T	
HS-6B	6	4	1-1/2	1/4	2.00

SEFCOR