

EHV MISCELLANEOUS

ALUMINUM • 345 - 500 KV

TYPE WGSTH

TYPE WGSTE

Weld Ground Stud For Pipe

Castings: 356-T6 Aluminum
Stud: 6061-T6 Aluminum

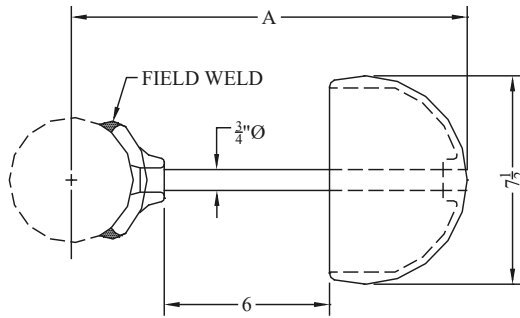


FIG. 1

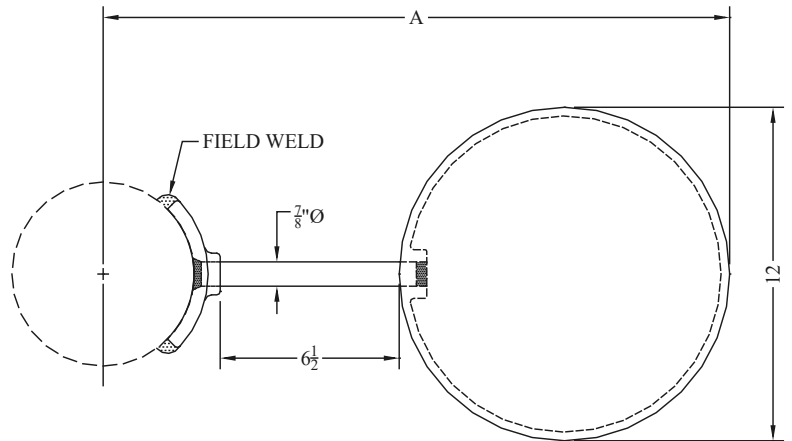


FIG. 2

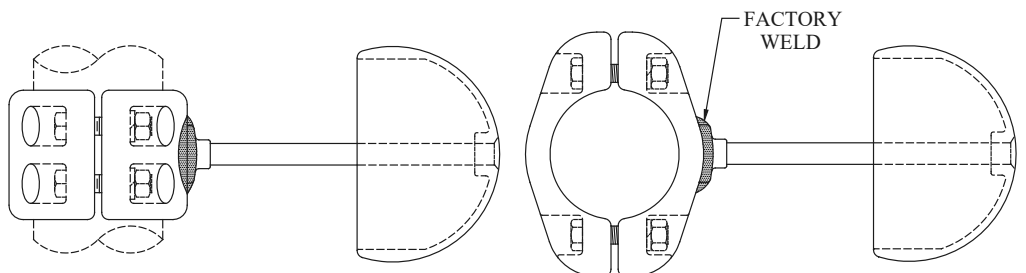
CATALOG NUMBER	FIG. NO.	MAX. KV	PIPE SIZE (NPS)	A
WGSTH-60	1	345	2-1/2	13-5/8
WGSTH-62	1	345	3	13-7/8
WGSTH-63	1	345	3-1/2	14-1/8
WGSTH-64	1	345	4	14-3/8
WGSTH-67	1	345	5	14-7/8
WGSTH-69	1	345	6	15-3/8
WGSTE-62	2	500	3	20-3/4
WGSTE-63	2	500	3-1/2	21
WGSTE-64	2	500	4	21-1/4
WGSTE-67	2	500	5	21-5/8
WGSTE-69	2	500	6	22-3/4

TYPE ABGSH

Bolted Ground Stud
For Pipe

Castings: 356-T6 Aluminum
Stud: 6061-T6 Aluminum

Type ABGSH ground stud is designed for corona-free service at 345 KV. For catalog number, substitute ABGSH for WGTSH in chart above. Contact factory for dimensions.



SEFCOR